

RESOLUTION NO. 320

A RESOLUTION ACCEPTING DEDICATED STREETS FOR USE BY THE PUBLIC:

WHEREAS, the streets below named, which are recorded on the final plat of "Beavercreek Estates" and are located within the City of Troutdale, have been dedicated to the City of Troutdale by Kenneth Kadow of Great Northern Development, for use by the public;

WHEREAS, a bond or equivalent security has been issued in favor of the City guaranteeing the quality of construction of said streets for a period of one year;

NOW, THEREFORE, BE IT RESOLVED BY THE COMMON COUNCIL OF THE CITY OF TROUTDALE that the City does hereby accept the following streets as dedicated streets to be operated and maintained by the City, and for use by the general public from this date forward.

Name of recorded streets:

- 1). S.E. 17th Street
- 2). S.E. Knarr Court
- 3). S.E. Beavercreek Lane (that portion North of Block 1 Lot 10 and South of Block 1 Lot 1).

PASSED BY THE COMMON COUNCIL OF THE CITY OF TROUTDALE THIS
13th DAY OF February, 1980

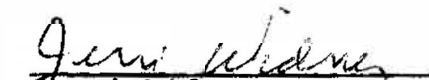
YEAS: 4

NAYS: 0

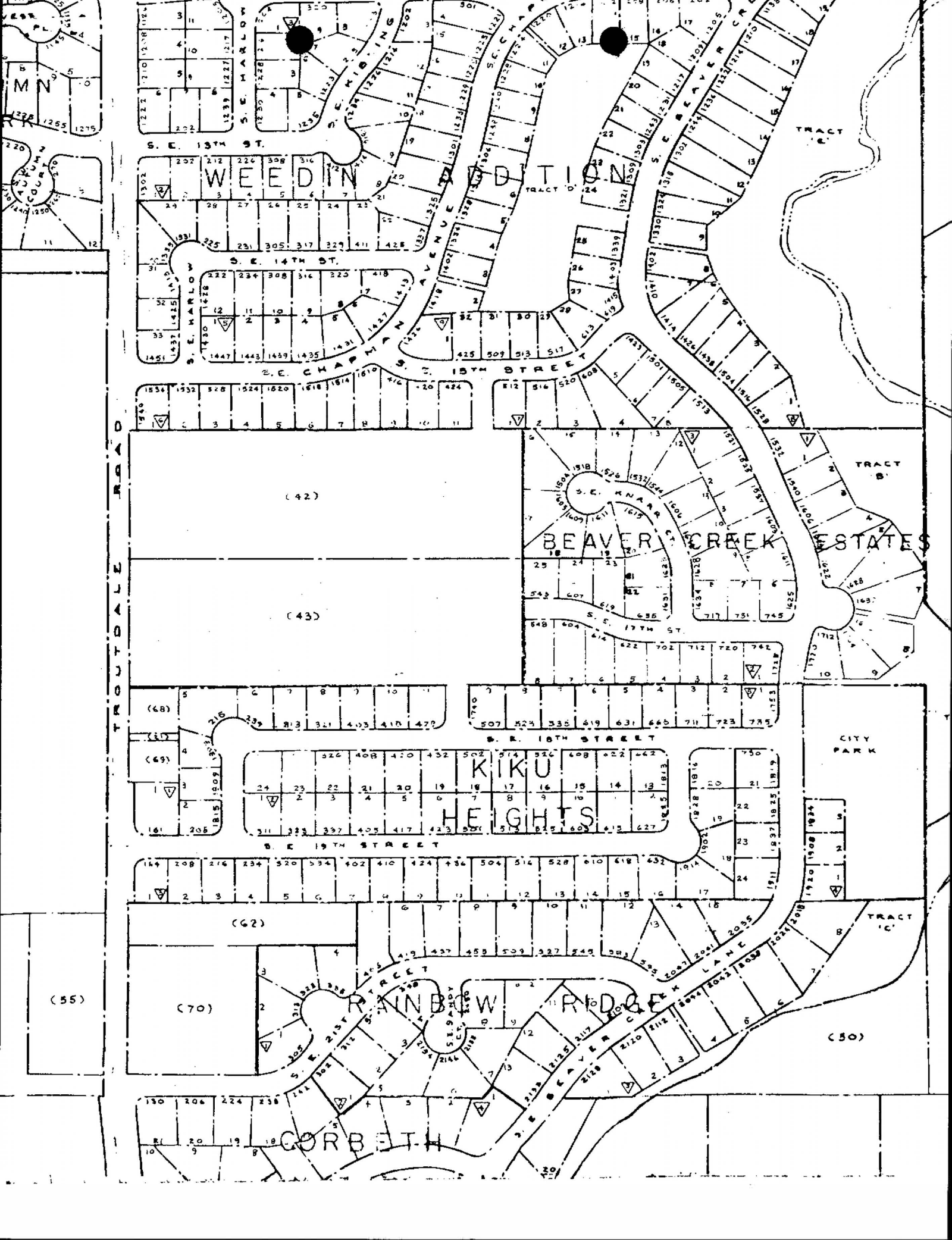


R.M. Sturges, Mayor

ATTEST:



Jerri Widner
City Recorder



MN

S. E. 13TH ST.

WEEDING ADDITION

S. E. 14TH ST.

S. E. MARLOW

S. E. CHARMA

S. E. 15TH STREET

BEAVER CREEK ESTATES

ROAD LOTS

(42)

(43)

(48)

(47)

(49)

KIKU HEIGHTS

S. E. 19TH STREET

CITY PARK

(62)

(70)

RAINBOW RIDGE

(50)

CORBETH