

P

## **ORDINANCE NO. 847**

### **AN ORDINANCE ADOPTING COMPREHENSIVE LAND USE PLAN MAP AND ZONING DISTRICT MAP AMENDMENTS ON APPROXIMATELY 143 ACRES OF LAND IN THE TROUTDALE REYNOLDS INDUSTRIAL PARK.**

#### **THE TROUTDALE CITY COUNCIL FINDS AS FOLLOWS:**


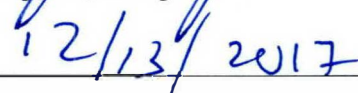
1. The Planning Commission held a hearing in this matter on October 18, 2017 and made a recommendation of approval to the City Council.
2. The City Council held hearings on October 24, 2017 and November 14, 2017 to take public testimony on the proposed map amendments.
3. The City Council confirms the Planning Commission's recommendation and proposed findings as adopted on October 18, 2017.
4. The Comprehensive Land Use Plan Map amendment criteria within TDC 6.200 are met.
5. The Zoning District Map amendment criteria within TDC 6.1400 are met.

#### **NOW, THEREFORE, BE IT ORDAINED BY THE COUNCIL OF THE CITY OF TROUTDALE**

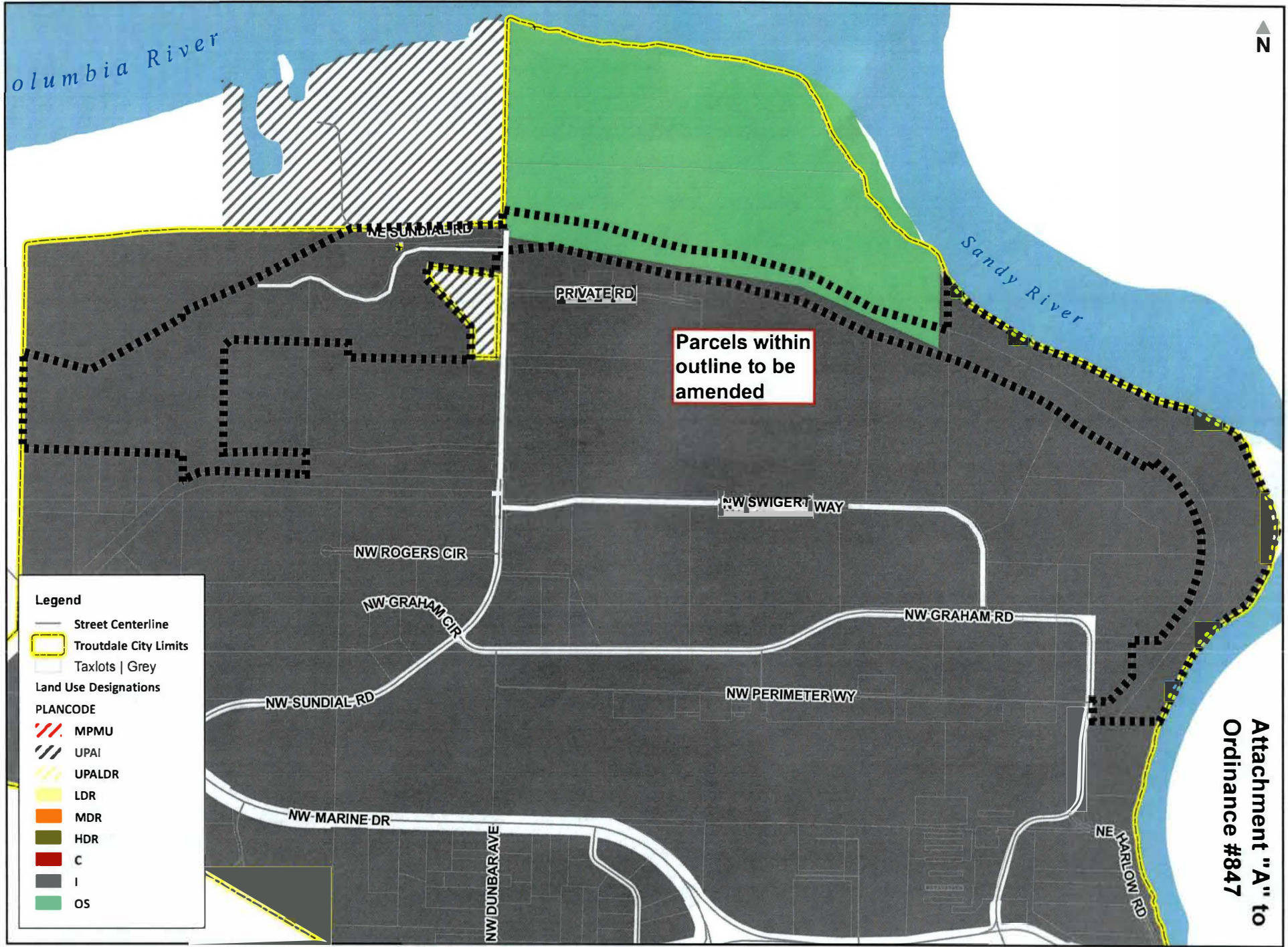
Section 1. The Troutdale Comprehensive Land Use Plan Map shall be amended as shown in Attachment A from Industrial (I) to Open Space (OS) for the Parcels in Question.

Section 2. The Troutdale Zoning District Map shall be amended as shown in Attachment A from General Industrial (GI) to Open Space (OS) for the Parcels in Question.

YEAS: 6  
NAYS: 0  
ABSTAINED: 0

  
\_\_\_\_\_  
Casey Ryan, Mayor  
  
\_\_\_\_\_  
Date

  
\_\_\_\_\_  
Sarah Skroch, City Recorder  
Adopted: December 12, 2017



**Legend**

- Street Centerline
- Troutdale City Limits
- Taxlots | Grey
- Land Use Designations
- PLANCODE
- MPMU
- UPAI
- UPALDR
- LDR
- MDR
- HDR
- C
- I
- OS

Parcels within outline to be amended

Attachment "A" to Ordinance #847

