

ORDINANCE NO. 553-0

AN ORDINANCE SPREADING THE ASSESSMENT FOR THE LOCAL IMPROVEMENT DISTRICT KNOWN AS SANDEE PALISADES IV (90-003); PROVIDING SERVICE FOR UTILITIES TO PROTECT AND ENHANCE THE VALUE OF PROPERTY AND DECLARING AN EMERGENCY.

WHEREAS, The project was inspected by the engineer and found to be constructed to City standards; and

WHEREAS, The City Council accepted, by resolution, this project.

NOW, THEREFORE, BE IT ORDAINED BY THE COMMON COUNCIL OF THE CITY OF TROUTDALE THAT:

SECTION 1 - Pursuant to applicable ordinances of the City of Troutdale and pursuant to applicable statutes of the State of Oregon, the Common Council of the City of Troutdale determined that the total cost of the approved local improvement is in the sum of \$568,748.98.

SECTION 2 - With this ordinance, the Common Council of the City of Troutdale spreads the approved total assessment according to the final assessment roll, which roll is attached to this ordinance and by this reference is incorporated herein.

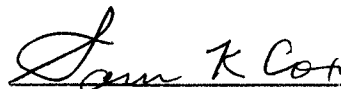
SECTION 3 - Emergency. Pursuant to Section 36 of the City Charter, the Council determines this to be an emergency ordinance and that it shall take effect immediately to enable the City to proceed with the process to authorize and subsequently sell bonds as soon as possible in the best interests of the City.

PASSED BY THE COMMON COUNCIL OF THE CITY OF TROUTDALE THIS 11TH DAY OF SEPTEMBER, 1990.

YEAS 5

NAYS 0

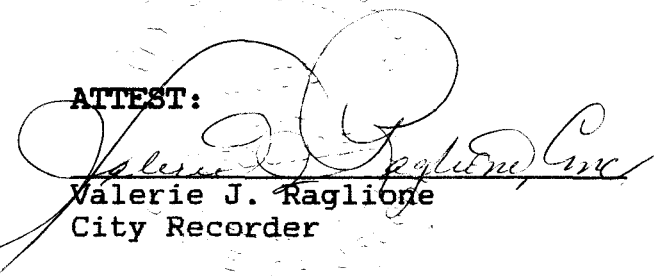
ABSTAINED 0



Sam K. Cox, Mayor

Date Signed: SEPTEMBER 12, 1990

ATTEST:



Valerie J. Raglione
City Recorder

PW94:42

CITY OF TROUTDALE, OREGON

SANDEE PALISADES IV SUBDIVISION
 LOCAL DISTRICT IMPROVEMENT NO. 90-003
 FINAL ASSESSMENT ROLL

Arley Kangas
 Tri West Group, Inc.

Property Description: Section 36, T 1N, R 3E,., W.M.

<u>Tax Lot:</u>	<u>Block:</u>	<u>Acres:</u>	<u>Final Assessment:</u>
27	9	.196	\$ 7,791.08
28	9	.207	7,791.08
29	9	.193	7,791.08
30	9	.210	7,791.08
31	9	.247	7,791.08
1	12	.273	7,791.08
2	12	.241	7,791.08
3	12	.207	7,791.08
4	12	.184	7,791.08
5	12	.211	7,791.08
6	12	.321	7,791.08
7	12	.380	7,791.08
8	12	.284	7,791.08
9	12	.203	7,791.08
10	12	.190	7,791.08
11	12	.188	7,791.08
12	12	.185	7,791.08
13	12	.197	7,791.08
14	12	.215	7,791.08
15	12	.321	7,791.08
16	12	.277	7,791.08
17	12	.213	7,791.08
18	12	.208	7,791.08
19	12	.191	7,791.08
20	12	.192	7,791.08
21	12	.194	7,791.08
22	12	.181	7,791.08
23	12	.180	7,791.08
24	12	.206	7,791.08
25	12	.227	7,791.08
26	12	.243	7,791.08
27	12	.351	7,791.08
28	12	.293	7,791.08
29	12	.297	7,791.08
30	12	.218	7,791.08
31	12	.240	7,791.08

CITY OF TROUTDALE, OREGON

SANDEE PALISADES IV SUBDIVISION
 LOCAL DISTRICT IMPROVEMENT NO. 90-003
 FINAL ASSESSMENT ROLL
 Continue

Property Description: Section 36, T 1N, R 3E,., W.M.

<u>Tax Lot:</u>	<u>Block:</u>	<u>Acres:</u>	<u>Final Assessment:</u>
1	13	.187	7,791.08
2	13	.172	7,791.08
3	13	.204	7,791.08
4	13	.184	7,791.08
5	13	.202	7,791.08
6	13	.215	7,791.08
7	13	.176	7,791.08
8	13	.176	7,791.08
9	13	.182	7,791.08
10	13	.173	7,791.08
11	13	.173	7,791.08
12	13	.173	7,791.08
13	13	.173	7,791.08
14	13	.199	7,791.08
15	13	.199	7,791.08
16	13	.173	7,791.08
17	13	.173	7,791.08
18	13	.173	7,791.08
19	13	.199	7,791.08
20	13	.186	7,791.08
21	13	.173	7,791.08
22	13	.173	7,791.08
23	13	.173	7,791.08
24	13	.173	7,791.08
25	13	.187	7,791.08
26	13	.208	7,791.08
27	13	.206	7,791.08
28	13	.215	7,791.08
29	13	.310	7,791.08
30	13	.224	7,791.08
31	13	.231	7,791.08
32	13	.217	7,791.08
33	13	.228	7,791.08
34	13	.208	7,791.08
35	13	.191	7,791.08
36	13	.216	7,791.08
37	13	.265	7,791.22

Total Final Assessments: \$568,748.98
 =====

SANDEE PALISADES

LOTS 27 THROUGH 31 BLOCK 9,
LOTS 1 THROUGH 31 BLOCK 12,
AND BLOCK 13

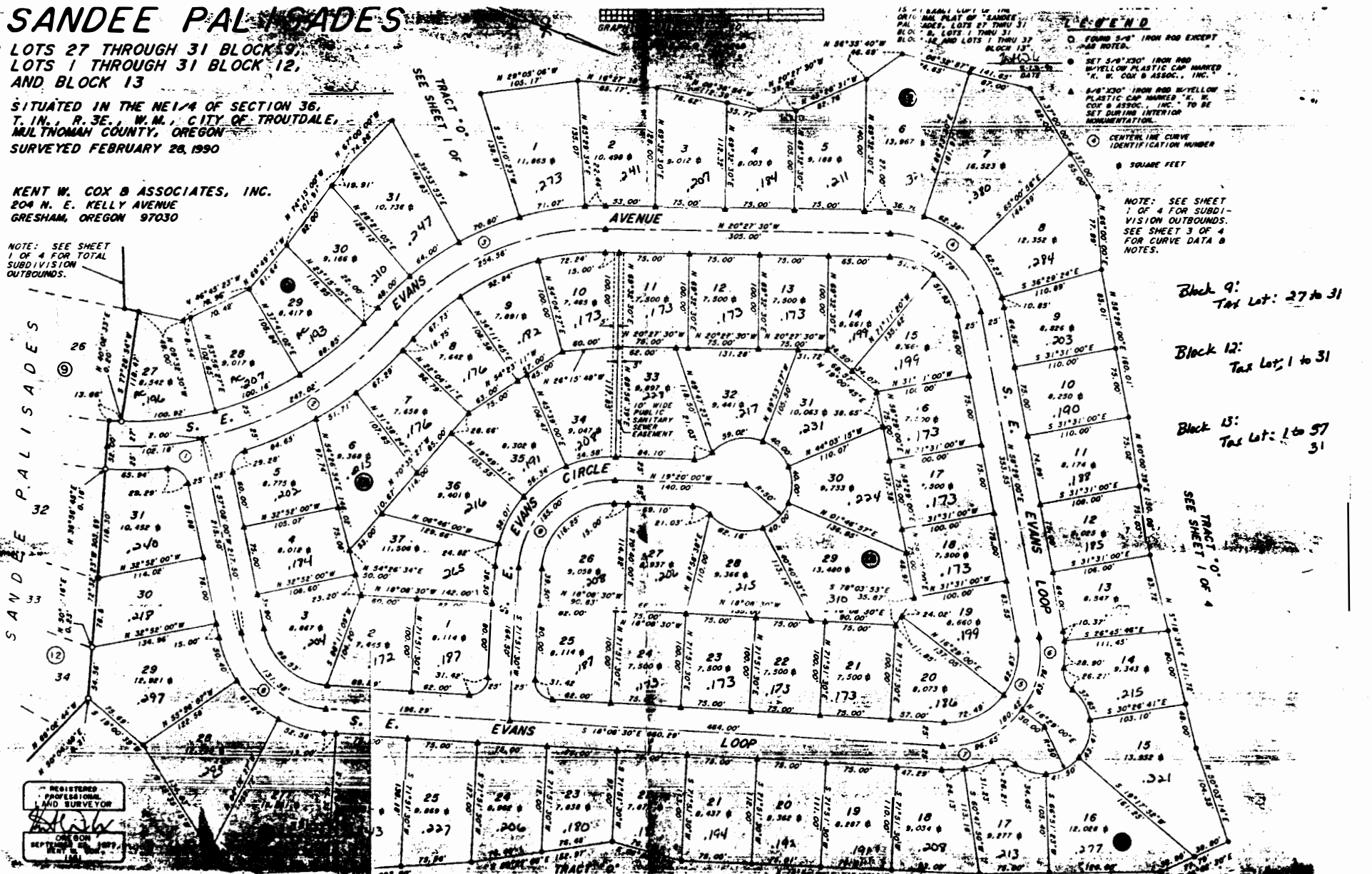
SITUATED IN THE NE 1/4 OF SECTION 36,
T. 1N., R. 3E., W.M., CITY OF TROUTDALE,
MULTNOMAH COUNTY, OREGON
SURVEYED FEBRUARY 28, 1990

KENT W. COX & ASSOCIATES, INC.
204 N. E. KELLY AVENUE
GRESHAM, OREGON 97030

NOTE: SEE SHEET
1 OF 4 FOR TOTAL
SUBDIVISION
OUTBOUNDS.

SANDY PALISADES

REGISTERED
PROFESSIONAL
LAND SURVEYOR
Kent W. Cox
SEPTEMBER 1989



LEGEND

- ① FOUND 5/8" IRON ROD EXCEPT AS NOTED.
- ② SET 5/8" IRON ROD W/ YELLOW PLASTIC CAP MARKED "K. W. COX & ASSOC., INC."
- ③ 5/8" IRON ROD W/ YELLOW PLASTIC CAP MARKED "K. W. COX & ASSOC., INC." TO BE SET DURING INTERIOR MONUMENTATION.
- ④ CENTERLINE CURVE IDENTIFICATION NUMBER
- ⑤ SQUARE FEET

NOTE: SEE SHEET
1 OF 4 FOR SUBDI-
VISION OUTBOUNDS.
SEE SHEET 3 OF 4
FOR CURVE DATA &
NOTES.

Block 9:
Tax Lot: 27 to 31

Block 12:
Tax Lot: 1 to 31

Block 13:
Tax Lot: 1 to 57
31

SEE SHEET 1 OF 4