

ORDINANCE NO. 1921

AN ORDINANCE RELATING TO STREETS.

BE IT ORDAINED BY THE COMMON COUNCIL OF THE CITY OF TROUTDALE:

SECTION 1

Attached hereto and by reference made a part hereof are the city of Troutdale Minimum Street Standards with illustrative diagram drawing E 7715-0.

SECTION 2

That whereas it is necessary for the immediate preservation of the peace, health, and safety of the City of Troutdale, and of inhabitants thereof and to preserve the credit of said City that this ordinance take effect immediately; therefore, an emergency is declared to exist, and this ordinance shall be in full force and effect from and after its passage by the Council.

YEAS: 4

NAYS: 0

Signed by the Mayor this 14th day of Aug., 1973.

R. M. Stungis
Mayor

ATTEST:

Recorder: Inuly V. Wenzel

Ordinance No: 192 191

City of Troutdale

MINIMUM STREET STANDARDS

I General Specifications

- A. Materials and Workmanship to meet standard specifications of OSHD.
- B. Typical Roadway Section.
 - 1) Obtain written approval from City Engineer for roadway section to be used.
 - 2) Typical Section shall show:
 - a) Width of right-of-way
 - b) Width of roadway
 - c) Type and compacted depth of base material
 - d) Type and compacted depth of surfacing material
 - e) Depth of paving
 - f) Sidewalks
 - g) Curbs

II Grading Specifications

- A. General
 - 1) Obtain written approval before construction.
 - 2) Notify City Engineer 24 hours before start of construction.
- B. Embankment Construction
 - 1) Compact to 95 percent maximum density.
 - 2) 6-inches loose depth layers
- C. Subgrade preparation
 - 1) Construct in accordance with standard specifications.
 - 2) Shape of finished roadway
 - 3) Thoroughly compacted with approved equipment.

- D. Inspection and approval by City Engineer before application of base material.

III Surfacing

A. General

- 1) Material source approval before construction.
- 2) Standard specifications apply for materials and workmanship.

B. Base materials

- 1) Inspection and approval of base before placement of leveling course
- 2) Base course depth determined by City Engineer.

IV Paving

A. General

- 1) Standard specifications apply to materials and workmanship.
- 2) Deviation from standard approved in writing from the City Engineer.
- 3) Notify City Engineer 24 hours in advance of paving.

B. Asphalt Concrete

- 1) Standard specifications shall apply.
- 2) Minimum depths shown on standard street drawings.

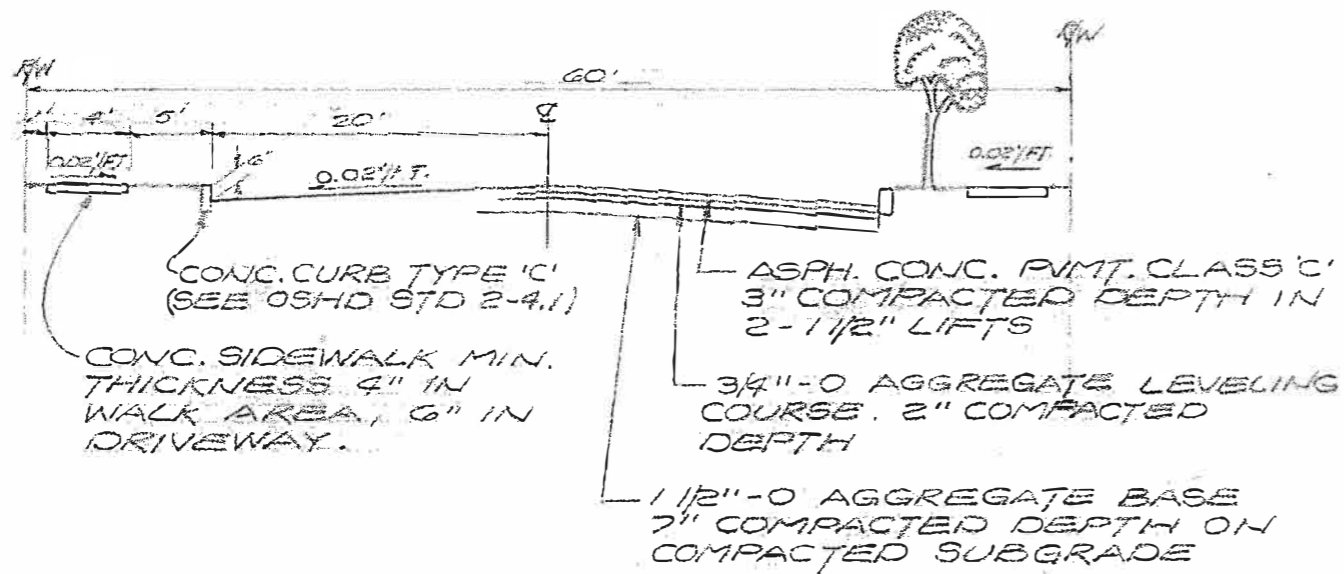
V Plans

A. Submit to City Engineer

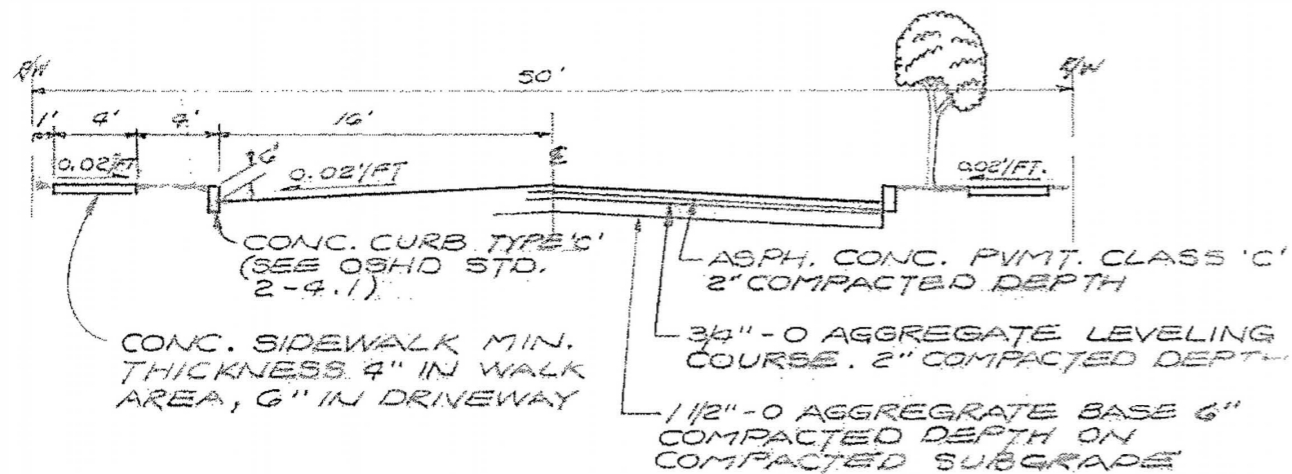
- 1) Show all utilities and location.
- 2) 10 days for checking.
- 3) Additional time for soil test, etc.

B. No work until written approval from City Engineer

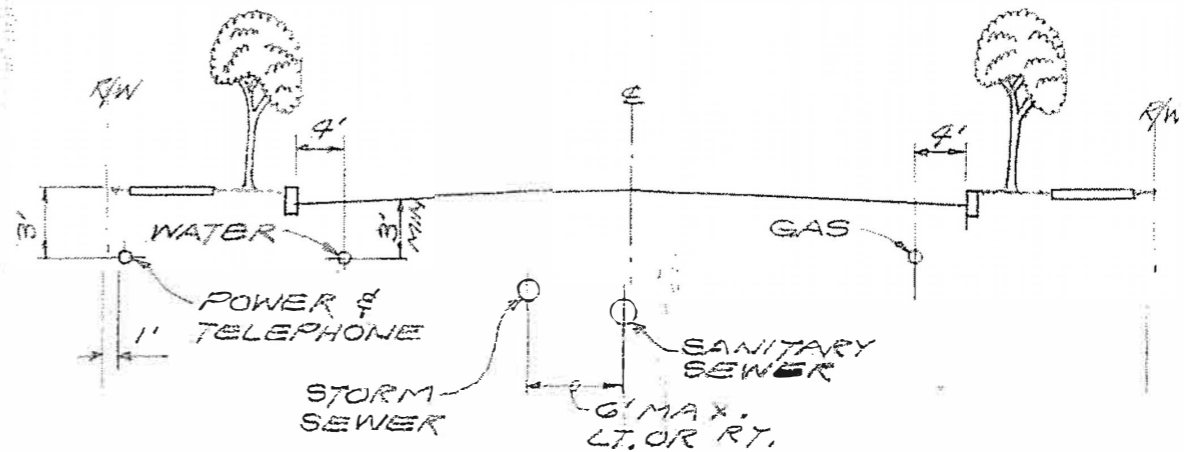
VI Acceptance by City upon completion if construction is approved by City Engineer



NEIGHBORHOOD COLLECTOR STREET

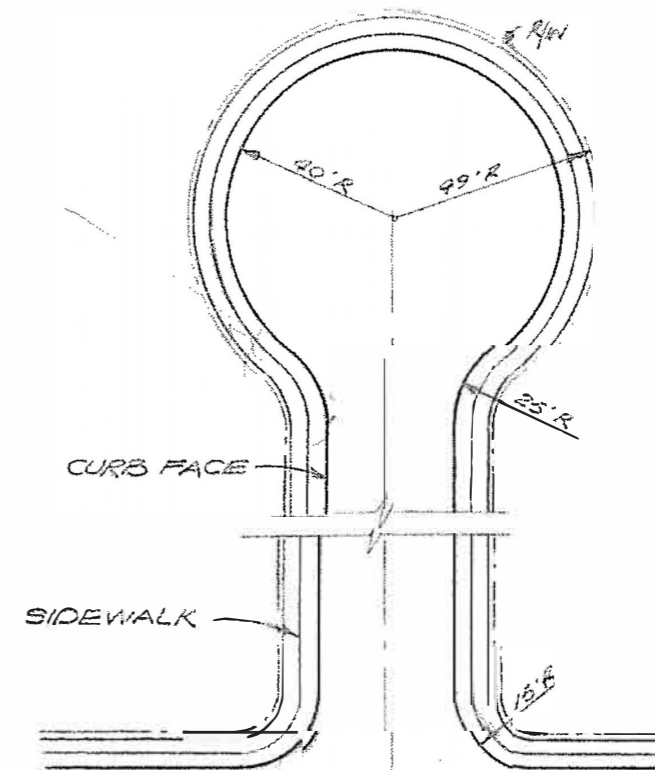


LOCAL RESIDENTIAL STREET



NOTE: WATER SHALL BE LOCATED SOUTH AND EAST OF C. GAS SHALL BE LOCATED NORTH AND WEST OF C.

UTILITY LOCATION



CUL-DE-SAC & INTERSECTION RADII

NOTES:

1. THESE STANDARDS ARE SET FORTH AS MINIMUM ALLOWABLE CONSTRUCTION STANDARDS. THE CITY ENGINEER MAY REQUIRE MODIFICATIONS DUE TO ADVERSE SOIL CONDITIONS, SPECIAL TRAFFIC CONDITIONS OR OTHER CONSIDERATIONS.
2. ALL MATERIALS AND WORKMANSHIP SHALL MEET THE REQUIREMENTS OF CURRENT OREGON STATE HIGHWAY COMMISSION STANDARD SPECIFICATIONS FOR HIGHWAY CONSTRUCTION.



CITY OF TROUTDALE, OREGON					
MINIMUM STREET STANDARDS					
SCALE	NONE	DATE	AUG 1973	RN	P7715.0
DES	DR	CK	OV	SHEET	1 OF 1
CORNELL, HOWLAND, HAYES & MERRYFIELD	SEATTLE		PORTLAND	CORVALLIS	BOISE
DWG E 7715-0					