

**ORDINANCE NO. 1193**

**AN ORDINANCE AMENDING THE ZONING MAP OF THE CITY OF CANBY, CLACKAMAS COUNTY, OREGON TO CHANGE THE ZONING BOUNDARY BETWEEN THE HEAVY COMMERCIAL (CM) ZONE AND THE LIGHT INDUSTRIAL (M1) ZONE. THE ZONING DISTRICT BOUNDARY SHIFT AFFECTS TAX LOTS 400, 500, 600, 601 AND 602 OF TAX MAP 4-1E-05A, LOCATED AT THE S.W. CORNER OF HIGHWAY 99E AND S. BERG PARKWAY.**

**WHEREAS**, an application was filed with the City Planning Department by Group Mackenzie on behalf of Plantore LLC/SR Smith Company, owner of Tax Lots 400, 500, 600, 601 and 602 of Tax Map 4-1E-05A to change the zoning boundary between the Heavy Commercial (CM) zone and the Light Industrial (M1) zone; and

**WHEREAS**, the zoning boundaries were previously established by Ordinance 1149 and this modification thereof was processed administratively as a Minor Modification; and

**WHEREAS**, public notice was posted and printed in the *Canby Herald*, as required by law; and

**WHEREAS**, the Canby Planning Department staff recommends that the City Council approve the proposed zoning boundary adjustment; and

**WHEREAS**, the Canby City Council considered the matter and recommendation of Planning Staff, reviewed the record and public testimony pursuant to the Canby Municipal Code; and

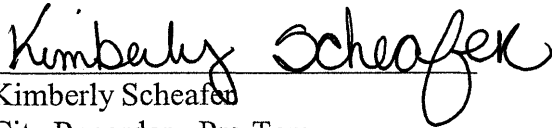
**WHEREAS**, the Canby City Council, after concluding its review and discussion on this matter and by motion duly made and seconded, voted unanimously to approve the zone change application; now therefore

**THE CITY OF CANBY ORDAINS AS FOLLOWS:**

**Section 1.** The boundary between the Heavy Commercial (CM) zone and the Light Industrial (M1) zone shall be as delineated in Exhibit A.

**Section 2.** The Mayor, attested by the City Recorder, is hereby authorized and directed to make the appropriate change on the City's zoning map in accordance with the dictates of Section 1 above.

**SUBMITTED** to the Canby City Council and read the first time at a regular meeting thereof on Wednesday, October 19, 2005 and ordered posted in three (3) public and conspicuous places in the City of Canby as specified in the Canby City Charter and to come before the City Council for final reading and action at a regular meeting thereof on Wednesday, November 2, 2005, commencing at the hour of 7:30 P.M. in the Council Meeting Chambers at Canby City hall in Canby, Oregon.

  
\_\_\_\_\_  
Kimberly Scheafer  
City Recorder - Pro Tem

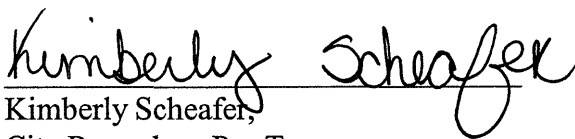
**PASSED** on second and final reading by the Canby City Council at a regular meeting thereof on the 2<sup>nd</sup> day of November, 2005, by the following vote:

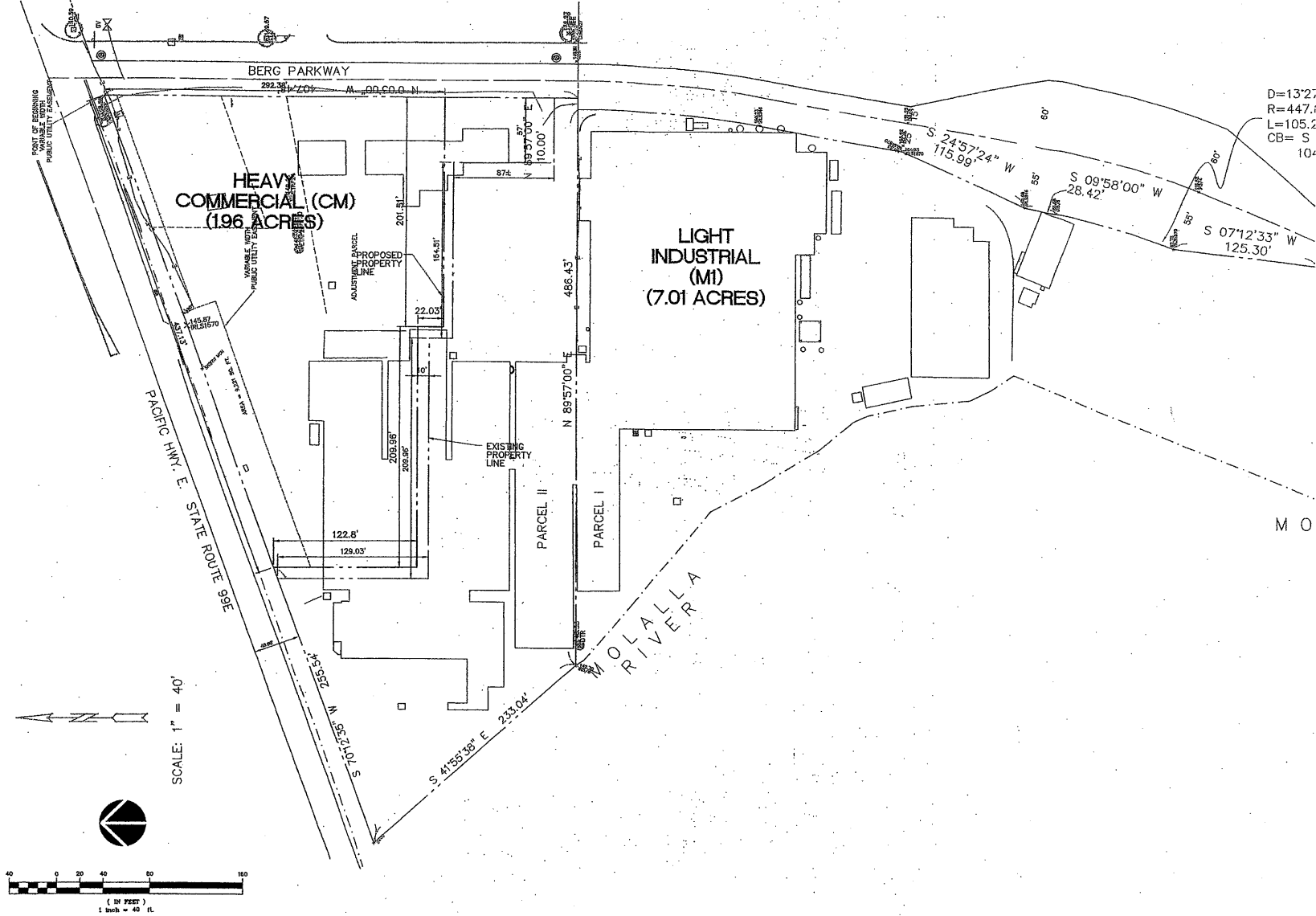
YEAS 3

NAYS 0

  
\_\_\_\_\_  
Melody Thompson, Mayor

**ATTEST:**

  
\_\_\_\_\_  
Kimberly Scheafer,  
City Recorder - Pro Tem



D=132.7  
 R=447.1  
 L=105.2  
 CB= S  
 10.

HEAVY  
 COMMERCIAL (CM)  
 (196 ACRES)

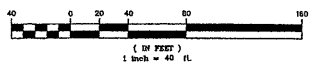
LIGHT  
 INDUSTRIAL  
 (MI)  
 (7.01 ACRES)

PACIFIC HWY. E. STATE ROUTE 99E

MOLALLA  
 RIVER

PARCEL II  
 PARCEL I

SCALE: 1" = 40'



**GROUP MACKENZIE**  
 Architecture  
 Interior Design  
 Land Use Planning  
 Civil Engineering  
 Structural Engineering  
 Transportation Planning  
 1040 SW Bancroft St. / PO Box 6709  
 Portland, OR 97209-0209  
 Tel: 503.224.1650 / 503.953.9379  
 Fax: 503.224.1216

Client:  
 PLANTORE  
 107 SW BERG  
 CANEY, OR 97013

Project:  
 PLANTORE  
 REZONING  
 LAND DIVISION

© GROUP MACKENZIE 2003  
 ALL RIGHTS RESERVED  
 THESE DRAWINGS ARE THE PROPERTY OF  
 GROUP MACKENZIE AND ARE NOT TO BE  
 REPRODUCED OR TRANSMITTED IN ANY MANNER,  
 WITHOUT PRIOR WRITTEN PERMISSION

REVISIONS:

DATE	BY	REVISION	ISSUED	CLOSING DATE

SHEET TITLE:  
 PROPOSED  
 ZONE CHANGE +  
 PROPERTY  
 LINE

FIRST ISSUED:  
 LAST ISSUED:  
 DRAWN BY:  
 CHECKED BY:  
 SHEET:

3

JOB NO.  
 2020163.00

PROPERTY LINE ADJUSTMENT 8/12/05

00047024/04/05/05-REV-002-2112 8/12/05 10:31 1/4