

minutes

**CITY OF BROOKINGS
SPECIAL COMMON COUNCIL MEETING
City Hall Council Chambers
898 Elk Drive, Brookings, Oregon
April 15, 1996
7:00 p.m.**

I. CALL TO ORDER

Mayor Davis called the meeting to order at 7:04 p.m.

II. PLEDGE OF ALLEGIANCE

III. ROLL CALL

Council Present: Mayor Tom Davis, Councilors Bob Hagbom, Dave Scott, Larry Curry, Ex-Officio Marci Wallace

Staff Present: City Manager Tom Weldon, Accounting Clerk Denise Wood

Media Present: Anita Rainey, Curry Coastal Pilot; Martin Kelly, KCRE

IV. DISCUSSION OF AZALEA PARK IMPROVEMENTS

- 1. Darrell Erb, Chairman of the Brookings-Harbor Softball League, gave a presentation on the progress of the softball fields project.**
- 2. There were no representatives present from the Kidtown Committee.**
- 3. Ann Gebhart gave an update on the American Music Festival activities.**

4 & 5. The Azalea Park Foundation and Azalea Park Gardens representative, Elmo Williams, reported to the Council the current status of these projects.

Councilor Hagbom moved, Councilor Scott seconded and the Council voted unanimously to approve the Parks and Recreation Commission's recommendation to allow continuance of the Azalea Park Gardens - Phase II.

6. Keith Pepper and Lee Rogers of the Parks and Recreation Commission presented the status of the Azalea Park cleanup.

Councilor Curry moved, Councilor Scott seconded and the Council voted unanimously to allow pruning of azaleas in Azalea Park only according to the following specific guidelines designed to allow for their preservation in their wild state:

- 1. Diseased branches;**
- 2. Dead branches;**
- 3. Branches necessary to allow adequate air flow.**

V. ADJOURNMENT

Councilor Hagbom moved, Councilor Scott seconded and the Council voted unanimously to adjourn the meeting at 8:23 p.m.



**Tom Davis
Mayor**

*Progress report:
City Council
Brookings, Oregon
April 15, 1996*

Azalea Park Foundation



*Elmo Williams
President*

*Lee Rogers
Vice President*

*Olivia Abbott
Treasurer*

*Jean Sheldon
Secretary*

APRIL 15, 1996

AZALEA PARK FOUNDATION:

To finalize Stage One of the plan submitted to the Parks and Recreation Commission and to the City Council, we must complete four major items:

1. Complete the sidewalks between Parking Lot #1 and the Gazebo.
2. Prepare the area for a new lawn.
3. Install a watering system, part drip and part sprinklers.
4. Lay 8,800 square feet of sod.

Dates and detail: Sidewalks

April 3: Tear out old walk between the present Main Entrance and the Gazebo. Load the broken asphalt and truck to the City Dump. Also eliminate the short asphalt walk to the old fountain. This will not be replaced. Phil Cox will be in charge.

Note: We need to rent or promote the use of a high speed diamond-tipped saw for an hour in order to to cut a clean line along the Main Entrance to separate the present walk from the road.

April 4: Utilizing power equipment, scrape out a six-inch bed for the new sidewalks: total length 325 lineal feet.

April 6: Mike Woudstra to install forms for the new sidewalks.

April 8: Volunteers to rake and level a three-inch bed of gravel for the new walks. To shovel ten yards of gravel into wheelbarrows and spread it will take ten volunteers about six hours.

April 9-10: Pour twenty yards of Gold Beach Mix cement under the direction of Mike Woudstra. Pat Hayes will furnish the cement pump and four volunteers will be on hand to move the pump hose.

Note: Pat Hayes will donate his labor. Mike Woudstra will donate the equivalent of \$250 of his labor. The high-speed saw and the skip loader with a five-foot blade will have to be rented from Kerr's. Perhaps we can get them to give us a break in price, or better still, donate the equipment.

Dates and Details: Lawn Preparation

April 3-4: Spray the old lawn with Roundup to kill the old grass.

April 13: Rototill the old lawn, rake and level. We will need 8-10 rakes and volunteers to rake up the old grass and level the soil.

April 15: Add lime and soil amendment and rototill.

Note: We will have to wait to install the new sod until the water lines have been installed. We will need to rent a heavy-duty Rototiller from Kerr's for one or two days.

Dates and Detail: Watering System

April 17-18: Trench and install a drip system to all rhododendrons and pop-up sprinkler heads to the lawn area. In addition we need to run a separate line to the boundary of Garden Number Two which abuts the Lower Parking Lot. Once that line is in place and stubbed off, it will be available to water Garden Number Two.

April 19-20: Volunteers will rake and level the lawn area in preparation for laying the new sod.

April 21-22: Volunteers will help roll out and lay the new sod. This job will be supervised by Allen Smith.

April 23: Remove sidewalk forms and clean up area. A crew of six to ten volunteers will be needed.

With luck and weather permitting, Phase One, the most expensive in both time and money will have been completed in time for the Azalea Festival. The native azaleas and many of the newly planted rhododendrons will be in bloom by the festival time so that everyone can enjoy the park.

Garden Number Two will be scheduled for preparation and planting once the area dries out enough for installation of a drainage system. This garden will be planted with trees, rhododendrons and other suitable flowers. There will also be a Patio Area with a concrete floor and a central planting well. Four benches and a trash receptacle will be added. Walks from Garden Number One will be extended to this Patio Area and another walk will lead from the Patio Area to join the present walk that leads from Parking Lot #2 to the Theater.

Note: All dates listed above are subject to weather conditions but they are target dates for us to shoot at. The cost to the Azalea Park Foundation for the work detailed above will be between \$12,000 and \$13,000. Details of these costs will be discussed in a meeting of the Foundation and approved before implementation.

Elmo Williams

AZALEA PARK FOUNDATION

GARDEN AREA: PHASE ONE.....nearing completion

New lawn, 9,000 square feet	\$3,600
Watering system for lawn and flower garden	4,200
325 linear feet of 5' non-skid wheelchair accessible cement walks	2,840
Storage shed, metal roof, vandal-proof windows, security door estimate:	850

GARDEN AREA: PHASE TWO.....refer to map: patio area

Finish removal of dead trees and vine roots	400
Purchase rhododendrons, azaleas, flowering trees and plants	1,743
Drainage system: 4" perforated pipe and sump	641
Patio area: 1,600 square feet, circular concrete center with redwood dividers, planting well in middle, vandal-proof benches and trash receptacles	3,800
364 linear feet of 5' wide non-skid wheelchair accessible cement walks	2,860
Terrace existing slope with railroad ties and shade plantings under trees, lawn as needed	584

WISH LIST.....for the future

Large carved wooden sign for entrance to the park	1,200
Sculpture (estimated)	9,000
Renovation of old stone fountain as base for sculpture	700
Trellis over entrance to Garden Number One	1,700
6 vandal-proof benches for elderly and handicapped	2,700
2 matching trash receptacles	750
Drinking fountain	1,500
Raised flower beds and plants	1,500
Specimen trees @ 60	

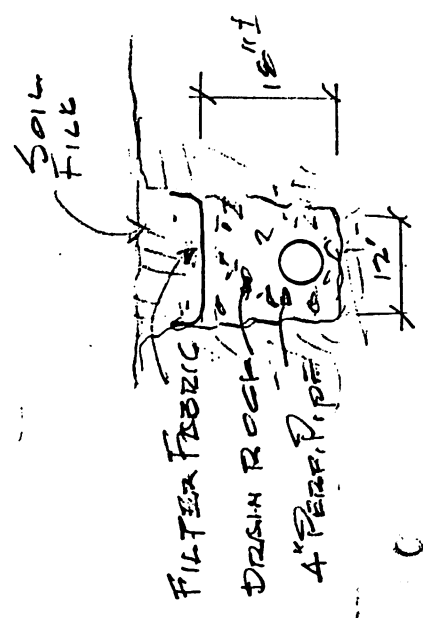
: Memorial Gardens :

Friendship Garden

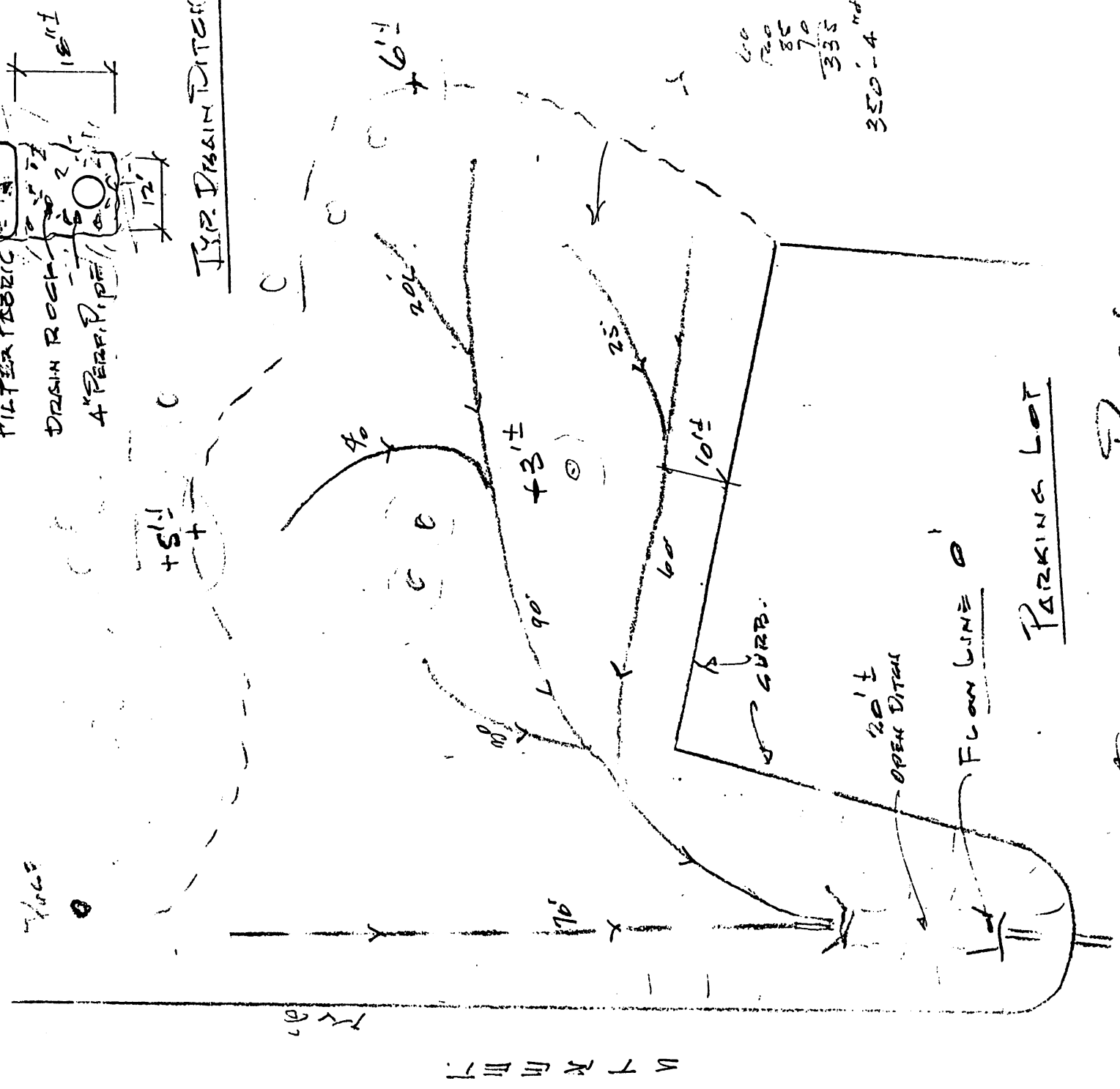
Elmo Williams, President
Azalea Park Foundation

d.m.h. 2/12/76

AZALEA Pk



TYPE DRAIN DITCH



600
700
85
70
355
350'-4"

DRAINAGE PLAN